

Light weight and effective double acting high pressure air operated pumps specially designed for use in mobile and portable greasing units.

Pumps are available with three different suction tube lengths, to fit all commercial grease drums: 35 lb (20 kg), 120 lb (50 kg) and 400 lb (185 kg). They include a height adjustable 2" NPTM bung adaptor.



FLUIDS HANDLED

- Grease up to NLGI-2.

MARKETS SERVED

- Agriculture.
- Service shops.
- Light industrial.

MODELS

PART No.	APPLICATION	WEIGHT
300	35 lb (20 kg) pails with bung adaptor.	8 lb (3,5 kg)
302	120 lb (50 kg) drums with bung adaptor.	9.5 lb (4,3 kg)
304	400 lb (185 kg) drums with bung adaptor.	10.6 lb (4,8 kg)

TECHNICAL DATA

Pump ratio	55:1
Air pressure operating range	20 to 140 psi (1,5 to 10 bar)
Air consumption (1)	5.8 scfm (165 NL/min)
Maximum fluid outlet pressure	7,700 psi (550 bar)
Air motor diameter	2 3/4" (70 mm)
Air motor stroke	1 1/2" (35 mm)
Delivery at 110 cpm	0.7 lb/min (300 g/min)
Maximum free flow delivery (2)	1.2 lb/min (540 g/min)
Air inlet	1/4" NPTF
Fluid outlet	1/4" NPTF
Wetted and seal materials	Steel / NBR / PTFE
Noise level (3)	85 dB
Manual	840 803

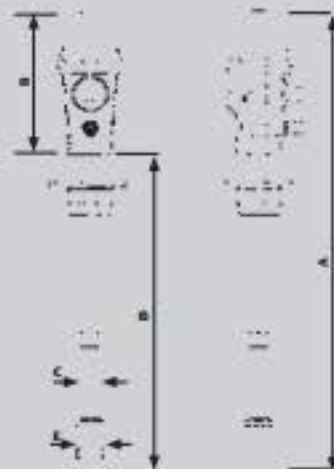
(1) Maximum air consumption with 90 psi (6 bar) air inlet pressure, NLGI-2 grease at 68 °F (20 °C) and 110 cpm.

(2) Maximum free delivery at 100 psi (7 bar). NLGI-2 grease.

(3) Maximum noise level measured at 3' (1 m) from the pump, 100 psi (7 bar) air pressure and free delivery.

DIMENSIONS Inches - (mm)

PART No.	300	302	304
A	24" (650)	36 1/2" (925)	44" (1.120)
B	8" (200)	8" (200)	8" (200)
C	1" (26)	1" (26)	1" (26)
D	16" (410)	28 1/2" (725)	36" (920)
E	1 1/2" (38)	1 1/2" (38)	1 1/2" (38)



NLGI-2, 68 °F (20 °C) CAPACITY CURVE

