

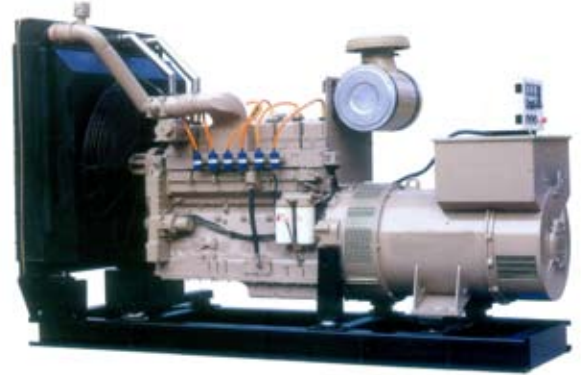
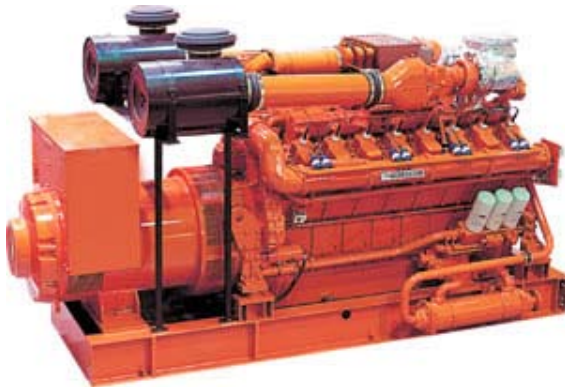


LE PRODUCTS
MANUFACTURED
UNDER AN ISO
9001:2000
CERTIFIED QUALITY
SYSTEM

8947 & 8949 MONOLEC® LANDFILL GAS ENGINE OIL

High performance straight-grade medium ash engine oils for landfill and 'dirty' gas engines

These products are high-performance straight-grade medium ash engine oils used for landfill gas pumping engines and generation units. Both are formulated with cutting edge salicylate chemistry which offers superior deposit control and resistance to oil nitration which results in extended lubricant drain intervals. They also contain increased wear control additives, including MONOLEC®, LE's exclusive wear reducing additive, which greatly reduces friction, heat and wear. They have been proven under the severe field performance conditions experienced in these type engine applications. They are also recommended for stationary and mobile engines using sour fuels.



FEATURES

- Ⓛ Improved resistance to halogen gas contamination often present in landfill gas.
- Ⓛ Superior oxidation stability and nitration resistance for extended oil life.
- Ⓛ Efficient detergent/dispersant additives keep engines clean.
- Ⓛ Minimize valve seat recession.
- Ⓛ Designed for engines requiring medium ash levels, yet a high TBN.
- Ⓛ Contains MONOLEC®, LE's exclusive wear-reducing additive.
- Ⓛ Minimizes deposits often caused by use of landfill gas.
- Ⓛ Provides decreased oil consumption meaning less maintenance and reduced cost of use.

RECOMMENDATION

- Can be used with sparkplug ignited engines that have an operating range of up to 3000 HP.
- Designed for use in landfill gas pumping engines and generation units.

**LUBRICATION
ENGINEERS,® Inc.**

Leaders in Lubricants



Technical Data

PHYSICAL CHARACTERISTICS – TYPICAL:

	<u>8947</u>	<u>8949</u>
Viscosity cSt @ 100°C	14.04	14.11
Viscosity cSt @ 40°C	128.14	128.63
Viscosity SUS @ 100°F (Calc)	593.87	596.14
Viscosity SUS @ 210°F (Calc)	74.17	74.44
HTHS Vis @ 150, cP (D4683)	4.2	4.2
VI	107	107
Sulfated Ash %	0.78	0.95
Gravity (D287) °API	29.5	29.4
Specific Gravity	0.8789	0.8794
Density (Calc) #/G	7.318	7.323
Copper Corrosion (D130)	1a	1a
Flash Point (D92) °F (°C)	500 (260)	521.6 (272)
Pour Point (D97) °F (°C)	-5.8 (-21)	-5.8 (-21)
SAE Grade	40	40
Acid Number (D664)	2.94	3.44
Base Number (D2896)	7.36	9.06
Color	red	red

MEETS THE PERFORMANCE REQUIREMENTS OF:

API CF
Caterpillar (3600)
Ajax
Bessemer
Clark
Cooper
Cummins
Guascor
Ingersol
GE Jenbacher 1000-0125
Superior
Wartsila
White
Waukesha
Deutz



LUBRICATION
ENGINEERS, Inc.

Leaders in Lubricants

