

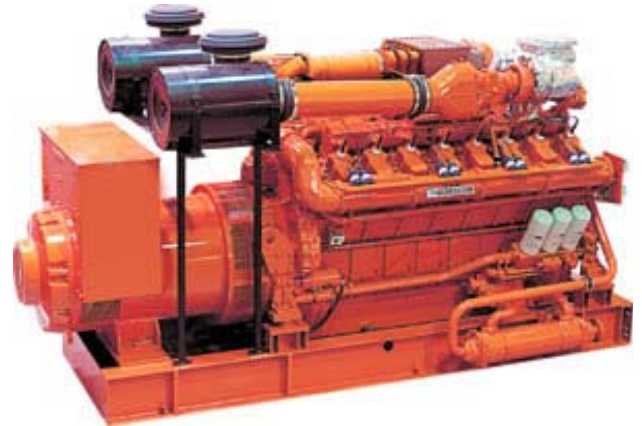


LE PRODUCTS  
MANUFACTURED  
UNDER AN ISO  
9001:2000  
CERTIFIED QUALITY  
SYSTEM

## 8945 MONOLEC® NATURAL GAS ENGINE OIL

**Superior straight-grade, low ash natural gas engine oil**

8945 MONOLEC® Gas Engine Oil is a superior, straight-grade, low ash natural gas engine oil formulated with cutting edge technology that differentiates its performance from other natural gas engine lubricants. Formulated using high-performance base fluids, salicylate additive chemistry for superior deposit control, and outstanding wear reducing additives, including MONOLEC®, LE's exclusive wear-reducing compound. All of these components work together synergistically to greatly decrease friction, minimize wear, remove heat, and keep engine components clean. It has been proven in various engine types, under severe operating conditions.



### FEATURES

- Ⓛ Superior oxidation stability and nitration resistance resulting in extended oil life.
- Ⓛ Efficient detergent/dispersant additives minimize engine deposits.
- Ⓛ Minimizes valve seat recession.
- Ⓛ Excellent wear protection.
- Ⓛ Contains MONOLEC®, LE's exclusive wear-reducing additive.
- Ⓛ Reduces oil consumption resulting in lower maintenance and cost of use.

### RECOMMENDATION

- Stationary gas engines used for power generation or natural gas pumping operations.
- Can be used with sparkplug ignited engines that have an operating range up to 3000 HP.
- Meets the performance requirements for mobile applications such as buses using engine types like Cummins, Detroit Diesel, etc. fueled by CNG, LNG, or propane.

**LUBRICATION  
ENGINEERS,® Inc.**

*Leaders in Lubricants*



# Technical Data

## PHYSICAL CHARACTERISTICS – TYPICAL:

**8945**

Viscosity cSt @ 100°C	14.08
Viscosity cSt @ 40°C	129.6
Viscosity SUS @ 100°F (Calc)	600.64
Viscosity SUS @ 210°F (Calc)	74.33
Viscosity Index	106
Calculated Sulfated Ash %	0.47
API Gravity	29.9
Specific Gravity	0.8767
Density (Calc) #/G	7.300
Copper Corrosion (D130)	1a
Flash Point (D92) °F (°C)	489.2 (254)
HTHS Vis @ 150, cP (D4683)	4.2
Pour Point (D97) °F (°C)	-0.4 (-18)
SAE Grade	40
Acid Number (D664)	2.94
Base Number (D2896)	4.99
Color	red

## MEETS THE PERFORMANCE REQUIREMENTS OF:

API CF  
Caterpillar (3600)  
Ajax  
Bessemer  
Clark  
Cooper  
Cummins CES 20074 (mobile)  
Guascor  
Ingersol  
GE Jenbacher 1000-0125  
Superior  
Wartsila  
White  
Waukesha  
Detroit  
Deutz



**LUBRICATION**  
**ENGINEERS, Inc.**

Leaders in Lubricants

